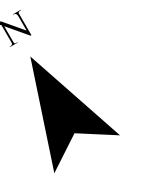


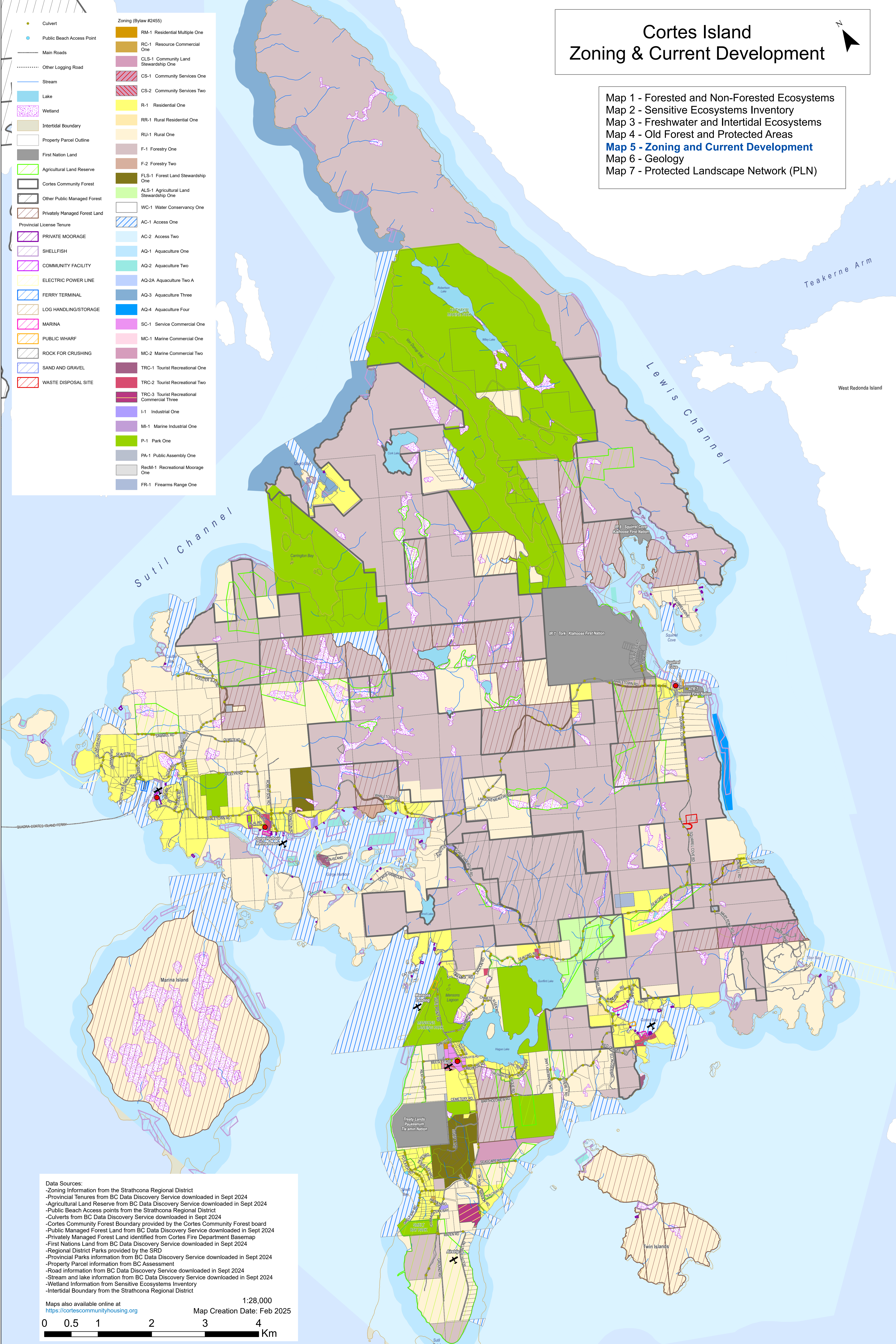
# Cortes Island Zoning & Current Development



- Map 1 - Forested and Non-Forested Ecosystems
- Map 2 - Sensitive Ecosystems Inventory
- Map 3 - Freshwater and Intertidal Ecosystems
- Map 4 - Old Forest and Protected Areas
- Map 5 - Zoning and Current Development**
- Map 6 - Geology
- Map 7 - Protected Landscape Network (PLN)

Zoning (Bylaw #2455)	
	RM-1 Residential Multiple One
	RC-1 Resource Commercial One
	CLS-1 Community Land Stewardship One
	CS-1 Community Services One
	CS-2 Community Services Two
	R-1 Residential One
	RR-1 Rural Residential One
	RU-1 Rural One
	F-1 Forestry One
	F-2 Forestry Two
	FLS-1 Forest Land Stewardship One
	ALS-1 Agricultural Land Stewardship One
	WC-1 Water Conservancy One
	AC-1 Access One
	AC-2 Access Two
	AQ-1 Aquaculture One
	AQ-2 Aquaculture Two
	AQ-2A Aquaculture Two A
	AQ-3 Aquaculture Three
	AQ-4 Aquaculture Four
	SC-1 Service Commercial One
	MC-1 Marine Commercial One
	MC-2 Marine Commercial Two
	TRC-1 Tourist Recreational One
	TRC-2 Tourist Recreational Two
	TRC-3 Tourist Recreational Commercial Three
	I-1 Industrial One
	MI-1 Marine Industrial One
	P-1 Park One
	PA-1 Public Assembly One
	RecM-1 Recreational Moorage One
	FR-1 Firearms Range One

	Culvert
	Public Beach Access Point
	Main Roads
	Other Logging Road
	Stream
	Lake
	Wetland
	Intertidal Boundary
	Property Parcel Outline
	First Nation Land
	Agricultural Land Reserve
	Cortes Community Forest
	Other Public Managed Forest
	Privately Managed Forest Land
	Provincial License Tenure
	PRIVATE MOORAGE
	SHELLFISH
	COMMUNITY FACILITY
	ELECTRIC POWER LINE
	FERRY TERMINAL
	LOG HANDLING/STORAGE
	MARINA
	PUBLIC WHARF
	ROCK FOR CRUSHING
	SAND AND GRAVEL
	WASTE DISPOSAL SITE



**Data Sources:**

- Zoning Information from the Strathcona Regional District
- Provincial Tenures from BC Data Discovery Service downloaded in Sept 2024
- Agricultural Land Reserve from BC Data Discovery Service downloaded in Sept 2024
- Public Beach Access points from the Strathcona Regional District
- Culverts from BC Data Discovery Service downloaded in Sept 2024
- Cortes Community Forest Boundary provided by the Cortes Community Forest board
- Public Managed Forest Land from BC Data Discovery Service downloaded in Sept 2024
- Privately Managed Forest Land identified from Cortes Fire Department Basemap
- First Nations Land from BC Data Discovery Service downloaded in Sept 2024
- Regional District Parks provided by the SRD
- Provincial Parks information from BC Data Discovery Service downloaded in Sept 2024
- Property Parcel information from BC Assessment
- Road information from BC Data Discovery Service downloaded in Sept 2024
- Stream and lake information from BC Data Discovery Service downloaded in Sept 2024
- Wetland Information from Sensitive Ecosystems Inventory
- Intertidal Boundary from the Strathcona Regional District

Maps also available online at <https://cortescommunityhousing.org>

Scale: 1:28,000  
Map Creation Date: Feb 2025